

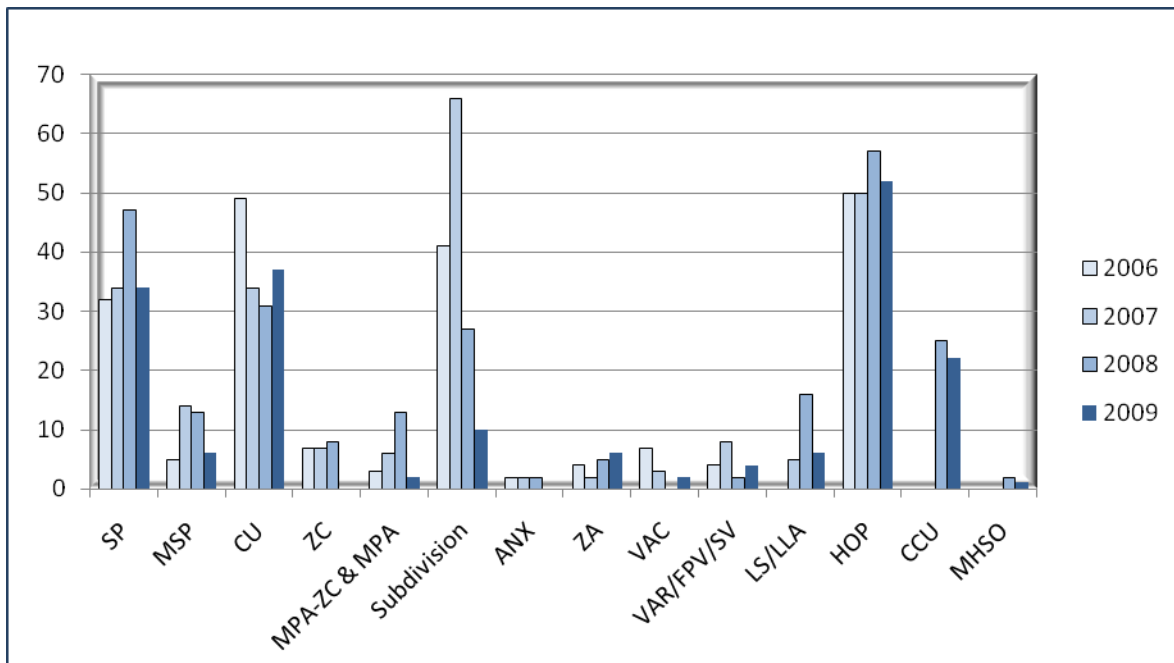
Planning Applications & Activities 2002-2009

<u>Planning Applications:</u>	2002	2003	2004	2005	2006	2007	2008	2009
Minor Site Plans (Commercial) (SP)	17	29	26	37	32	34	47	34
Major Site Plans (Commercial) (MSP)	3	2	4	2	5	14	13	6
Conditional Use Permits (CU)	17	37	30	34	49	34	31	37
Zone Changes (ZC)	3	3	12	12	7	7	8	0
Zone Change/Master Plan Amendments (MPA-ZC)/(MPA)	4	2	3	6	3	6	13	2
Subdivision Applications*	4	7	42 ¹	38 ²	41 ³	66 ⁴	27 ⁵	10 ⁶
Annexations (ANX)	0	3	1	0	2	2	2	0
Language Amendments (ZA)	3	4	3	0	4	2	5	6
Right-of-way Vacations (VAC)	5	5	2	3	7	3	0	2
Variances (VAR/FPV/SV)	1	4	2	0	4	8	2	4
Lot Splits/Lot Line Adjustments (LS/LLA)	N/A	N/A	N/A	N/A	N/A	5	16	6
Home Occupation Permits (HOP)	36	33	39	50	50	50	57	52
County Referrals (CCU)	N/A	N/A	N/A	N/A	N/A	N/A	25	22
Model Home Sales Office	N/A	N/A	N/A	N/A	N/A	N/A	2	1
Total Planning Applications	93	129	164	182	204	231	248	182
% Change	37%	39%	27%	11%	12%	13%	7%	-27%
Cumulative Change (2002 – 2009)								96%

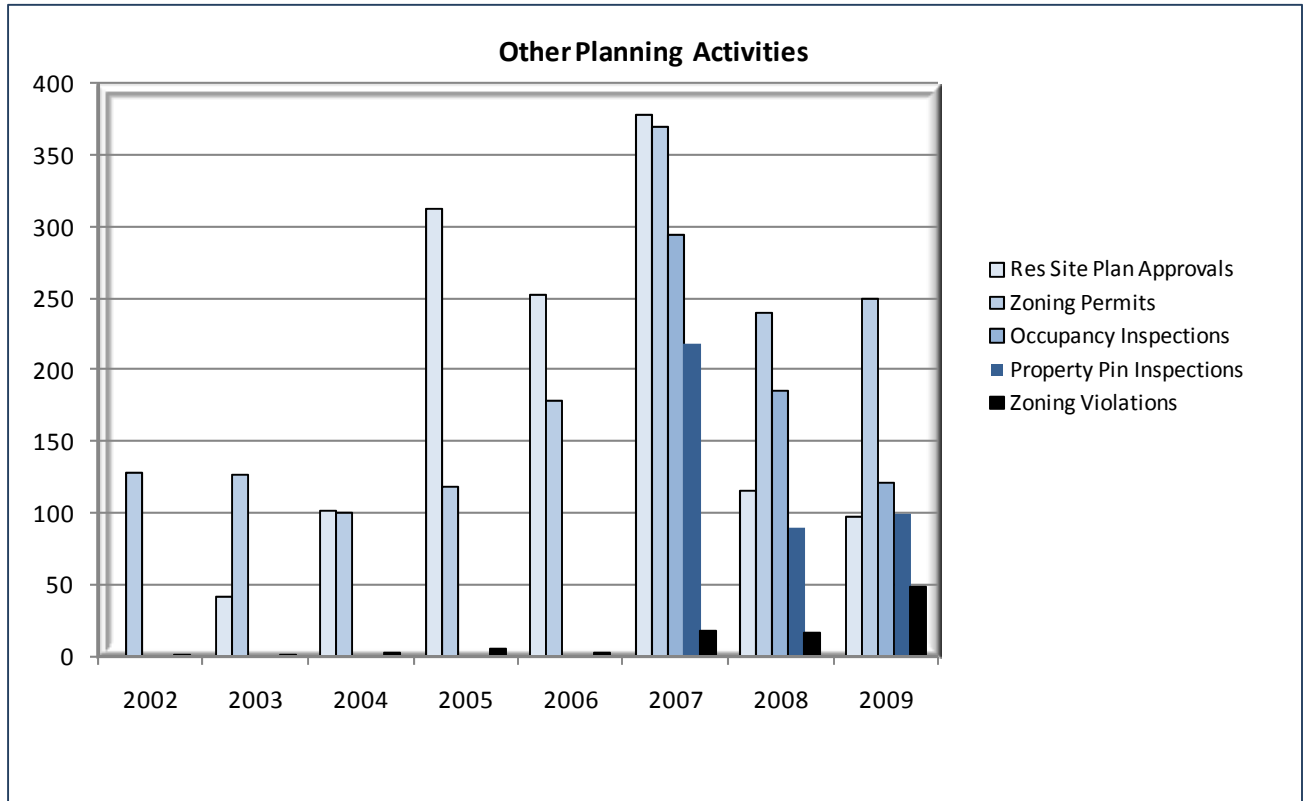
* Since each is processed separately, "Subdivision Application" includes Sketch Plat, Preliminary Development Plan, Preliminary Plat, Final Plat applications and Planned Unit Development Applications. Also includes subdivisions that were submitted but withdrawn.

- ¹ In 2004, of the 42 "Subdivision Applications", 23 were Final Plat applications.
- ² In 2005, of the 38 "Subdivision Applications", 15 were Final Plat applications.
- ³ In 2006, of the 41 "Subdivision Applications", 18 were Final Plat applications.
- ⁴ In 2007, of the 66 "Subdivision Applications", 36 were Final Plat applications.
- ⁵ In 2008, of the 27 "Subdivision Applications", 11 were Final Plat applications.
- ⁶ In 2009, Of the 10 "Subdivision Applications", 4 were Final Plat applications.

Planning Applications 2006 - 2009



Other Planning Activities (2002 -2009)



<i>Other Planning Activities:</i>	2002	2003	2004	2005	2006	2007	2008	2009
Residential Site Plan Approvals*	not available	42	102	312	252	378	116	98
Zoning Permits (fences, sheds, retaining walls & driveways)	128	127	101	119	178	369	240	249
Property Pin Inspections	N/A	N/A	N/A	N/A	N/A	218	90	121
Residential Occupancy Inspections	not available	not available	not available	not available	not available	294	186	99
Zoning Violation Cases	1	1	2	5	2	18	17	49
Total Other Planning Activities	129	170	205	436	432	983¹	463¹	485¹
% Change		21%	113%	-1%	128%	-53%	7%	
Cumulative Change (2004 – 2009)								241%

* Duplex = 2 approvals

¹ Total for 2007-2009 does not include Residential Occupancy Inspections.

Building Permits 2005-2009

	2005	2006	2007	2008	2009
Single Family (Detached)	96	116	176	92	93
Single Family (Attached)	108	68	198	4	2
Mobile Homes	107	84	50	62	53
Non-Residential	27	23	21	28	35
Additions, Alterations, Conversions	664	726	965	573	534
Demolitions	22	15	10	12	16
Excavation / Grading	41	24	40	57	14
Total Permits*	1065	1142	1527	997	996
<i>% Change</i>	<i>16%</i>	<i>7%</i>	<i>34%</i>	<i>-35%</i>	<i>0%</i>
<i>Overall Change (2005 vs 2009)</i>					<i>-6%</i>
Valuation	\$86 million	\$65 million	\$145.9 million	\$104.575 million	\$63.2 million
<i>% Change</i>	<i>146%</i>	<i>-24%</i>	<i>124%</i>	<i>-28%</i>	<i>-40%</i>
<i>Overall Change (2005 vs 2009)</i>					<i>-27%</i>

* Total includes Zoning Permits (sheds, fences, retaining walls, etc.)

